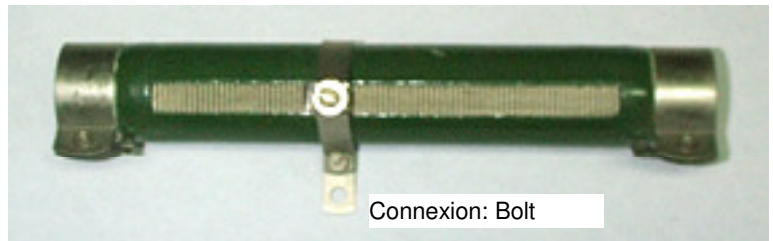
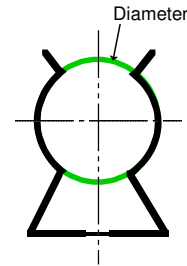
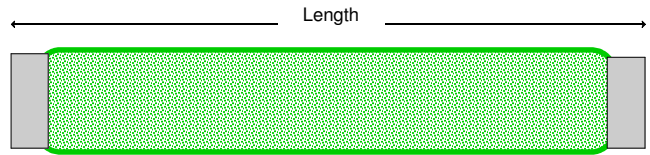


Power Resistors: Adjust Resistors are used for tuning Grid Current.
Limit of High Voltage Transformers
Shunt

| Reference | Power watt | Resist ohm | Dimensions D * Lg |
|----------------------------------|------------|------------|-------------------|
| 67950-Rés-100w-4.7 | 100 | 4.7 | 20 * 120 |
| 67950-Rés-100w-10 | 100 | 10 | 20 * 120 |
| 67950-Rés-100w-47 | 100 | 47 | 20 * 120 |
| 67950-Rés-100w-100 adjust | 100 | 100 | 20 * 120 |
| 67950-Rés-100w-470 | 100 | 100 | 20 * 120 |
| 67950-Rés-100w-1k adjust | 100 | 220 | 20 * 120 |
| 67950-Rés-100w-2k2 | 100 | 470 | 20 * 120 |
| 67950-Rés-100w-3k3 | 100 | 1000 | 20 * 120 |
| 67950-Rés-100w-4k7 | 100 | 4700 | 20 * 120 |
| 67950-Rés-100w-5k6 | 100 | 5600 | 20 * 120 |
| 67950-Clip-D20 | | | |
| 67950-Rés-200w-4.7 | 200 | 4.7 | 25 * 168 |
| 67950-Rés-200w-10 | 200 | 10 | 25 * 168 |
| 67950-Rés-200w-47 | 200 | 47 | 25 * 168 |
| 67950-Rés-200w-100 adjust | 200 | 100 | 25 * 168 |
| 67950-Rés-200w-470 | 200 | 470 | 25 * 168 |
| 67950-Rés-200w-1k | 200 | 1000 | 25 * 168 |
| 67950-Rés-200w-1k5 | 200 | 1500 | 25 * 168 |
| 67950-Rés-200w-2k2 | 200 | 2200 | 25 * 168 |
| 67950-Rés-200w-2k7 | 200 | 2700 | 25 * 168 |
| 67950-Rés-200w-3k3 | 200 | 3300 | 25 * 168 |
| 67950-Rés-200w-4k7 adjust | 200 | 4700 | 25 * 168 |
| 67950-Rés-200w-5k6 | 200 | 5600 | 25 * 168 |
| 67950-Clip-D25 | | | |
| 67950-Rés-300w-4.7 | 300 | 4.7 | 30 * 250 |
| 67950-Rés-300w-10 | 300 | 10 | 30 * 250 |
| 67950-Rés-300w-47 | 300 | 47 | 30 * 250 |
| 67950-Rés-300w-100 | 300 | 100 | 30 * 250 |
| 67950-Rés-300w-390 | 300 | 390 | 30 * 250 |
| 67950-Rés-300w-470 | 300 | 470 | 30 * 250 |
| 67950-Rés-300w-1k adjust | 300 | 470 | 30 * 250 |
| 67950-Rés-300w-1k5 | 300 | 1000 | 30 * 250 |
| 67950-Rés-300w-3k3 | 300 | 1000 | 30 * 250 |
| 67950-Rés-300w-4k7 ajust | 300 | 4700 | 30 * 250 |
| 67950-Rés-300w-5k6 | 300 | 5600 | 30 * 250 |
| 67950-Clip-D30 | | | |
| 67950-Rés-700w-100 | 700 | 100 | 50 * 375 |
| 67950-Rés-700w-470 | 700 | 220 | 50 * 375 |
| 67950-Rés-700w-1k | 700 | 1000 | 50 * 375 |
| 67950-Rés-700w-4k7 | 700 | 4700 | 50 * 375 |
| 67950-Rés-700w-10k | 700 | 10000 | 50 * 375 |
| 67950-Clip-D50 | | | |



Ammeter to Measure grid current ==> Ref: 67961-Galva grille.

Powerful: 100 à 300w

Connexions: Clips ou Bolt

Serial E03: 10 - 22 - 47

Serial E06: 10 - 15 - 22 - 33 - 47 - 68

Serial E12: 10 - 12 - 15 - 18 - 22 - 27 - 33 - 39 - 47 - 56 - 68 - 82

Making on your request is possible.

Price by quantities: Please, contact us.

Power Potentiometer: Potentiometers are used for tuning Grid Current.
They are plant in serial circuit power resistor grid.

| Reference | Power watt | Resist ohm | Dimensions D * Lg |
|----------------------|------------|------------|-------------------|
| 67950-Pot-25w-1000E | 20 | 1000 | 40 * 30 |
| 67950-Pot-50w-1000E | 40 | 1000 | 50 * 40 |
| 67950-Pot-80w-1000E | 80 | 1000 | 80 * 50 |
| 67950-Pot-100w-1000E | 100 | 1000 | 90 * 55 |

