



FR-59251 Allennes Les Marais (Lille)

Phone: +33 (0) 320 53 62 98

Fax: +33 (0) 320 53 63 08

Website: <http://www.soudeuse-haute-frequence.com>

Courriel: transtec.hf@soudeuse-haute-frequence.com

Composants Electromécaniques

Electromechanical timers: They are supplied with connectors and fixing clip.

To get a DPDT output, you have to use the electromechanical timers filed below.

References	Dimensions	Supply 50Hz
67990-Tempo-48-24-1RT	48*48	24
67990-Tempo-48-110-1RT	48*48	110
67990-Tempo-48-230-1RT	48*48	230
67990-Tempo-96-24-1RT	96*96	24
67990-Tempo-96-230-1RT	96*96	230
67990-Temp Q-48-24-2RT	48*48	24
67990-Temp Q-48-230-2RT	48*48	100..230



Limit current relay = Anode Overcurrent Limit: Intensity range on request; Mainly 1 up to 4 A.

Electronic version is supplied with its resistor sensor and memory.

Ref: **67990-Disrupt Anode mechanic** Price: 503.00 €uros

Ref: **67990-Disrupt Anode electronic** Price: 352.00 €uros

Electronic Anode Current Disrupter :

It is drawn with filters in order to bear HF perturbations.

It is supplied with all modern functions:

- * Sensitivity: 1mA ..10A with insulating shunt
- * Alternative or Direct Current
- * Disrupting with Memory & Timing Reset
- * Safety (Relay: NO ou NF)
- * Limit I et %I - Timing Start - Peak Clipping
- * 2° Outputs 1RT

Diagramme de fonctionnement

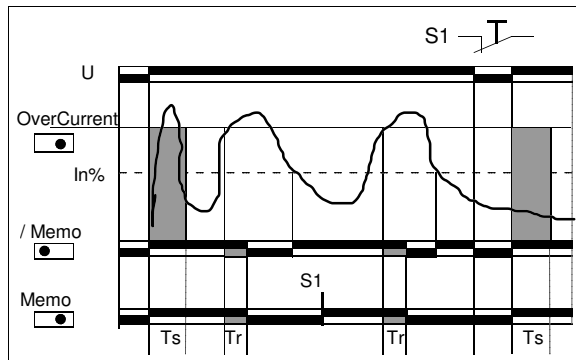
S1 = Reset <0,1 sec

U = Supply

R = Relay

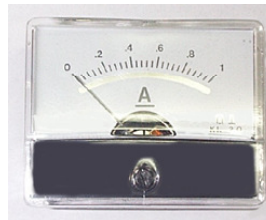
Ts = Timing Start: 0..10 sec

Tr = Timing Peak Clipping: 0..5 sec



Ammeters: They are supplied with the graduation adapted to the machine.

Reference	Current Acc	Dimensions W H	Technology
67990-Ammet-0.5A	0,5	55 * 44	Ferro-Mag
67990-Ammet-1A	1,0	55 * 44	Ferro-Mag
67990-Ammet-3A	3,0	55 * 44	Ferro-Mag
67990-Ammet-6A	6,0	55 * 44	Ferro-Mag
67990-Ammet-10A	10,0	55 * 44	Ferro-Mag
67990-Ammet-15A	15,0	55 * 44	Ferro-Mag
67990-Ammet-100mV	Shunt	60 * 47	Magnet



Some galvanometers have recourse to an external shunt. They are supplied with insulating fixing devices.

Ref: **67990-Shunt-10A / 100mV** Price: 149,00 €uros

Intensity _____
Voltage input of galva _____

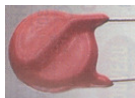


Foot switch: They are used for controlling the moving down of press for tarpaulins welding machines. It is supplied with specific connexion ar automaton Input.



Ref: **67990-Foot switch**
Price: 360,00 €uros

EMC Filter Components: For protection of all electromechanical components : Light - Fans - Timer - Relay - Automaton



Ceramic capacitor 10nF - 3000v - 1A
Reference: 67990-C-10nF-3kV

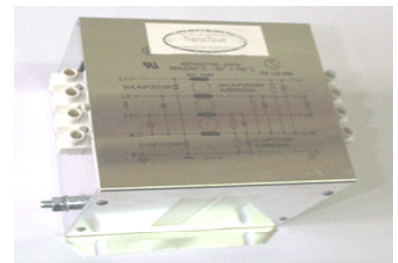
Ferrit in two parts to plant on existing cables.

Reference: 67990-Ferrit D5
Reference: 67990-Ferrit D8



EMC Filter Supply: This Filters has been designed to suppress HF Perturbations on electrical Supply and to protect Computers in the Factory.

- * Voltage: 400Vac - 1 ou 3 Phases
- * 100VA for accessories: laser, automaton, antflash, light, servomotor..
- * 3kVA up to 40kVA for machines



References	Sizes X * Y * Z	Current 50Hz
67990-Filtre 1ph 100VA	56 * 31 * 24	1
67990-Filtre 1ph 3kVA	110 * 130 * 50	17
67990-Filtre 3ph 20kVA	155 * 170 * 120	35
67990-Filtre 3ph 40kVA	100 * 200 * 350	70



Industrial Keyboard : drawn for Proofness against High Frequency Perturbations.

You can work just near electrode or cavity even radiations are maximum.

Reference: 67990-HF Keyboard

Unit Price: 197,00 €uros