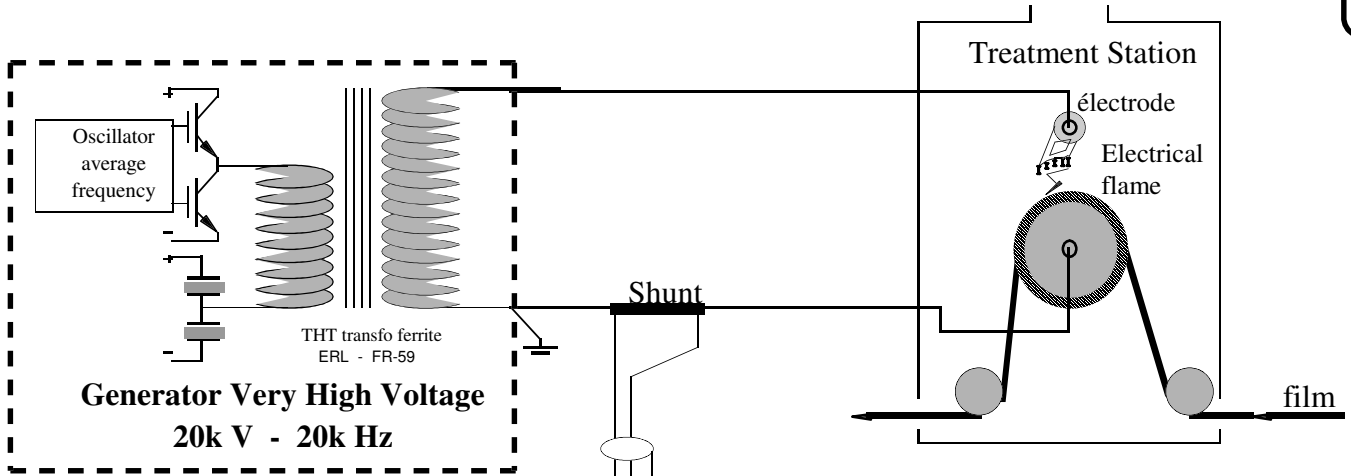
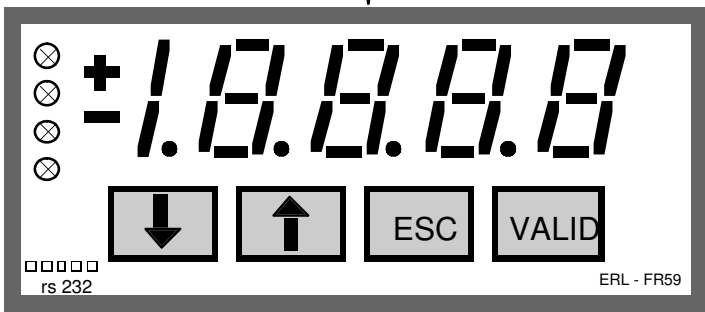


P



Isolated measurement

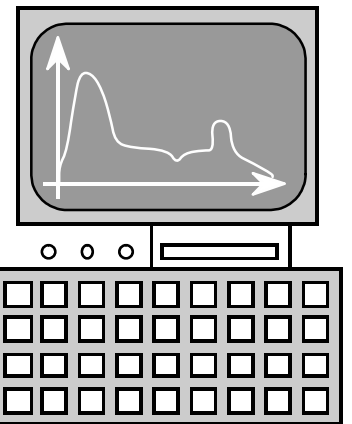
- 1° - Sequential treatment (bottles, welding réservations.....)
- 2° - Analogical treatment assessment
- 3° - High Treatment Limit (sampled)
- 4° - Low Treatment Limit
- 5° - Hole detection
- 6° - Correlations: speed, width, thickness.....
- 7° - Adherence measurement by correlation



Checking and alarms adaptable on all types of generators.

RS232 isolated connexion

APM to measure current and speed, width, thickness and also adherence coefficient.
 For a permanent checking and recording of coronatreatment.



Portable computer to data acquisition

The measurement of corona treatment quality is very difficult since this checking is always made with samples when the machine is stopped. We have added a current measurement apparatus which allows recording and transfer of datas to a computer. After several significant tests, you can lay down a correlation between a current, speed, width and the corona treatment. This calculation guarantees a good assessment of the generator according to the product.

The following step is the APM programme in order to detect treatment change and to activate the alarm of the automatic machine when the material varies or when the station is too hot.....

Measurement accessories bottles and pens of Dynes tests (32 to 52 dynes).
 See page P 6640.